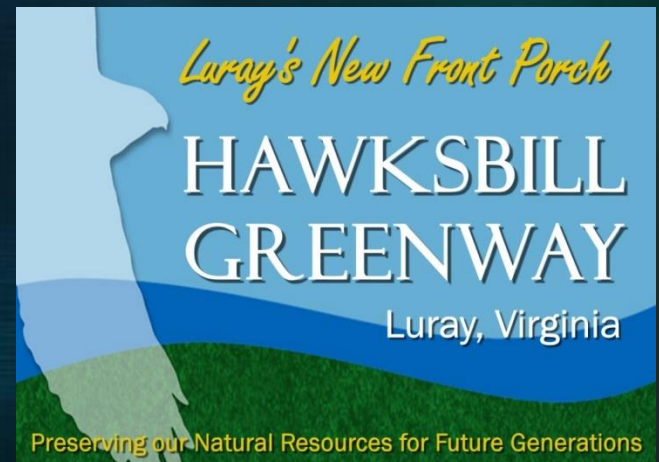
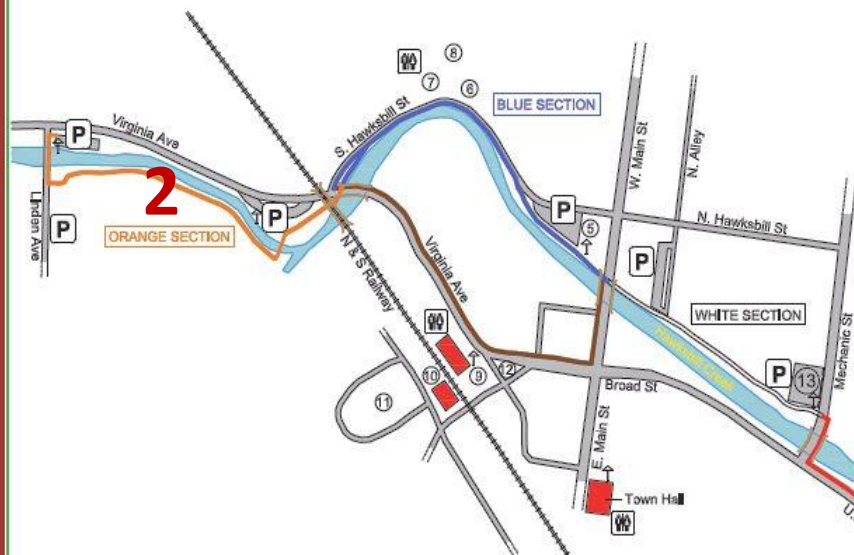


Hawksbill Greenway

For our Disabled & Wounded Warriors

A Proposal for Fishing Platforms



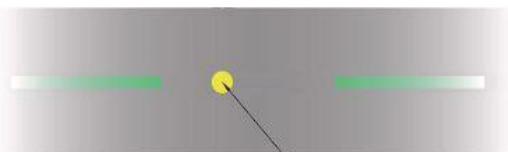


Key to Circled Numbers on Map:

- | | |
|--|--|
| ① Flowering Forest | ⑦ Crockery and Bottles Found at Base of Cliff |
| ② Riparian Buffer | ⑧ Champion Chinquapin Oak Tree |
| ③ Luray Garden Club Memorial Garden | ⑨ Visitor Center - Historic Restored Train Depot |
| ④ Fishery Rock Structures | ⑩ Library |
| ⑤ Ruffner Plaza | ⑪ Inn Lawn Park |
| ⑥ Cliffside Pocket Park and Butterfly Garden | ⑫ Confederate Soldiers Monument |
| | ⑬ Farmer's Market |

HEALTH INFORMATION: CALORIES BURNED PER MILE BY WALKING

SPEED/POUNDS	100 lb	120 lb	140 lb	160 lb	180 lb	200 lb	220 lb	250 lb	275 lb	300 lb
2.0 mph	57	68	80	91	102	114	125	142	156	170
2.5 mph	55	66	75	87	98	109	120	136	150	164
3.0 mph	53	64	74	85	95	106	117	133	146	159
3.5 mph	52	62	73	83	94	104	114	130	143	156
4.0 mph	57	68	80	91	102	114	125	142	156	170
4.5 mph	64	76	89	102	115	127	140	159	175	191
5.0 mph	73	87	102	116	131	145	160	182	200	218



Yellow Dots Paint Marker at
0.1 mile increments

DISTANCE MARKER DETAIL Not to Scale

- A. PAINT COLOR OF STRIPES
CORRESPONDS TO TRAIL SECTION.
- B. PAINT MARKERS ARE PLACED AT TENTH
OF A MILE INCREMENTS, PASSING TEN
(10) MARKERS EQUALS ONE (1) MILE.

Luray

The Town where Caverns meet the Sky.

HAWKSBILL GREENWAY

Luray's New "Front Porch"

1

RED SECTION



200' 0 200' 400'
GRAPHIC SCALE

P Parking

↑ Informational Kiosk
Locations

Restrooms

To Do Everyday
GET OUTSIDE
Exercise. Laugh. Get Right. Stay Healthy.
Supported By
Virginia Foundation for Healthy Youth

Molly J. Ward
Secretary of Natural Resources

COMMONWEALTH of VIRGINIA
Department of Game and Inland Fisheries

Robert W. Duncan
Executive Director

July 16, 2014


Harry H. Heard III, DDS
33 N. Park St.
Luray, VA 22835

Dear Dr. Heard,

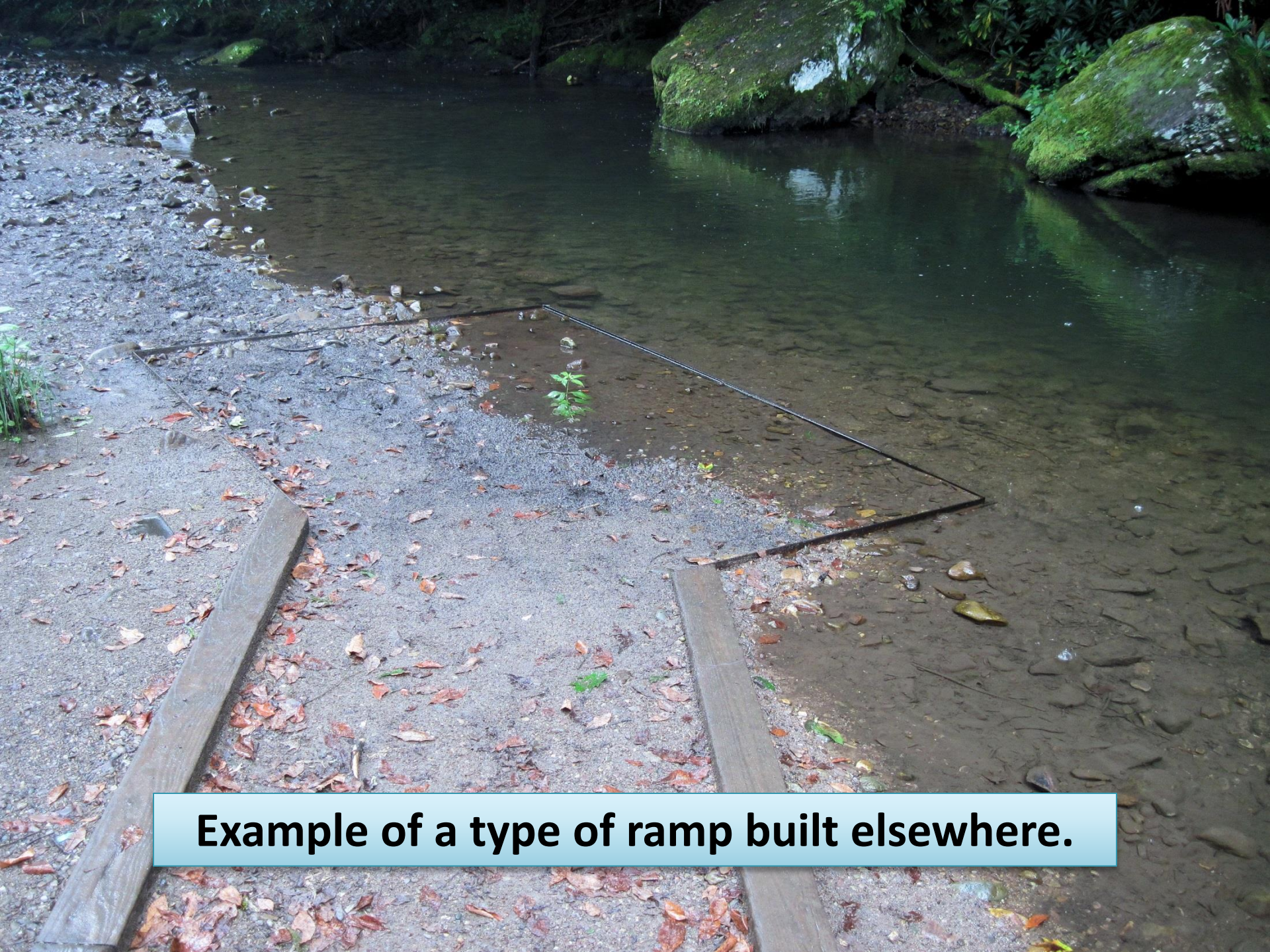
The Virginia Department of Game and Inland Fisheries is supportive of improving handicapped angler access to streams and reservoirs across the commonwealth. While there are ample handicapped assessable docks and fishing piers located on reservoirs, these facilities are rare on flowing streams. Over a decade ago VDGIF partnered with the United States Forest Service to construct multiple wheelchair accessible fishing piers along Whitetop Laurel Creek in Southwest Virginia. These piers are located within the Jefferson National Forest, and are adjacent to the Virginia Creeper Hiking/Biking Trail. Whitetop Laurel Creek in that area is also one of the Department's stocked trout streams. These fishing piers have been very popular with anglers visiting Whitetop Laurel Creek. The piers are constructed of treated lumber and secured to the stream bank with metal anchors and poured concrete. Anchors were drilled into the bedrock along the stream bank. Each pier hangs slightly over the edge of the stream channel and is elevated only a few feet from the surface of the stream. These structures are in the immediate flood plain and have been subject to high water many times. They were developed and positioned to withstand high water and have required minimal maintenance since construction.

I recently met with you and Ken Beyer of the Hawksbill Greenway Foundation and you asked for recommendations for the best locations to place handicapped fishing piers on Hawksbill Creek along the greenway in Luray. I selected four different locations that would all be well suited for fishing piers. All locations were easily accessible from the greenway trail and parking areas. The reach of Hawksbill Creek that runs along the length of the greenway is an excellent stream for angling. Hawksbill Creek has good year-round flows, an abundant warm water fish population, and is stocked with trout by VDGIF eight times from October 1 through June 1. It is one of the most popular recreational fishing destinations in Page County. VDGIF highly endorses the construction of these handicapped assessable fishing piers and would be happy to partner with other sponsors of this project. VDGIF would also be willing to contribute funding to the project.

If you have any questions please feel free to contact me at our office in Verona.



The Hawksbill Greenway landscape is gentle and is more suited to platforms or decks.



Example of a type of ramp built elsewhere.



Another ramp example

Our landscape is gentle and more suited to platforms or decks which transition from smooth walkways to a design similar to this platform.



Courtesy of the Bryson City / Swain County Chamber of Commerce.
Oconaluftee River - east bank in downtown Cherokee NC fishing platform.

Proposed Sites for Fishing Platforms Along the Hawksbill Greenway



Did You Know?

The creek is stocked
10 times a year from
October –May.

The average amount
of rainbow trout is
730 or more than
3 tons a season!





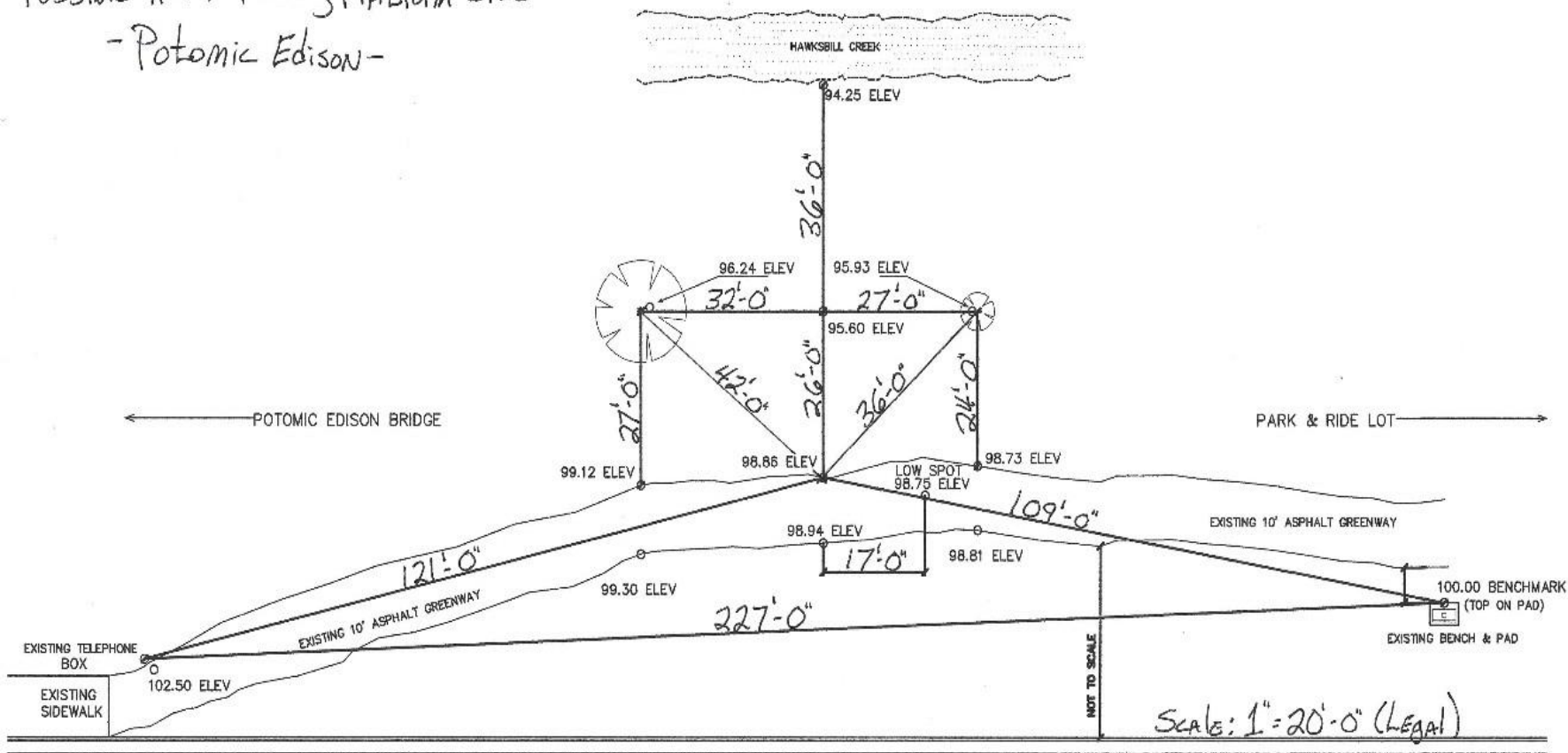
Location 1 - Other side of SVEC Parking



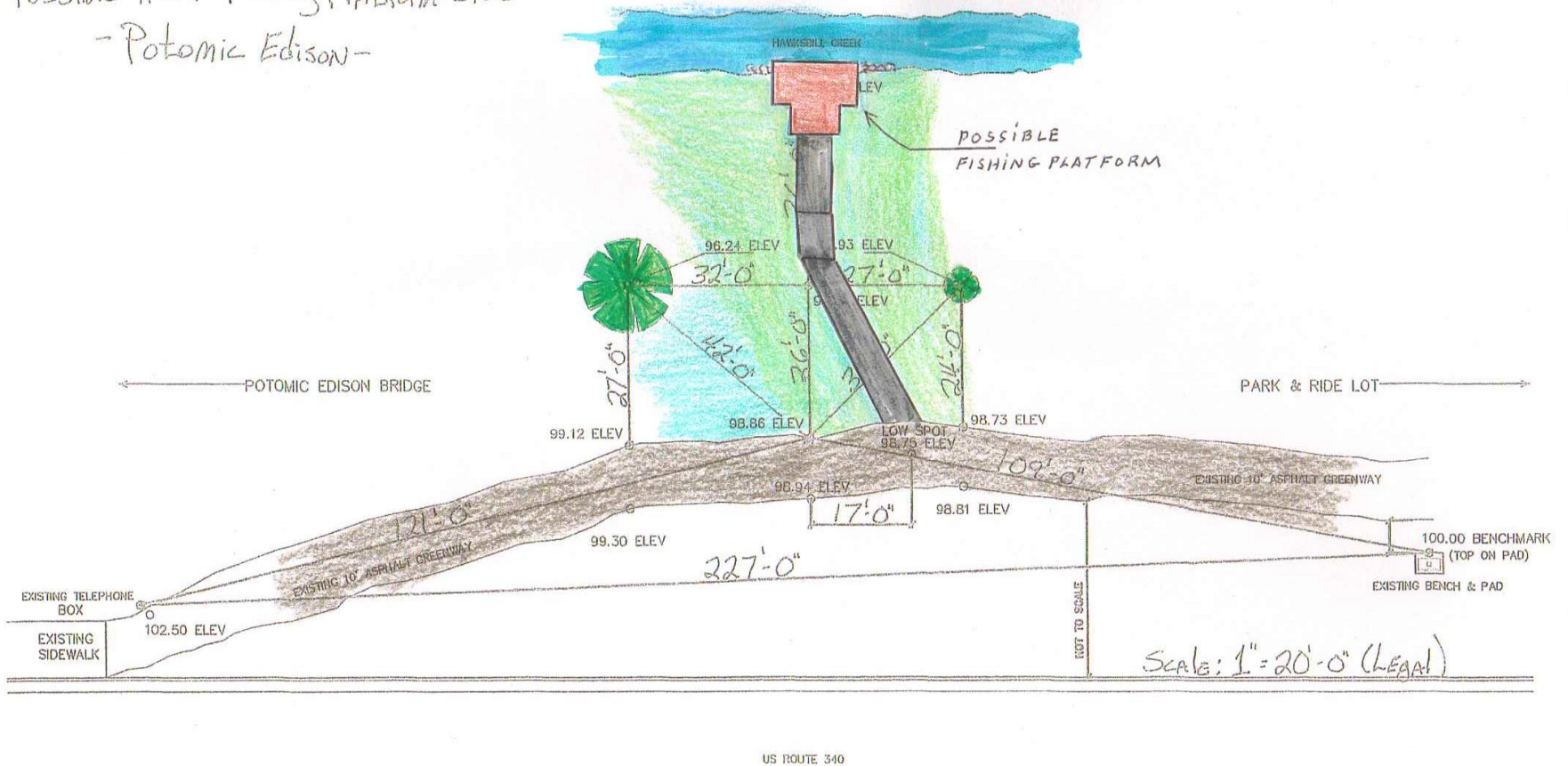


Looking at Mechanic Street Bridge from proposed location

Possible HCAP Fishing Platform Site - Potomac Edison -



Possible HCAP Fishing Platform Site - Potomac Edison -





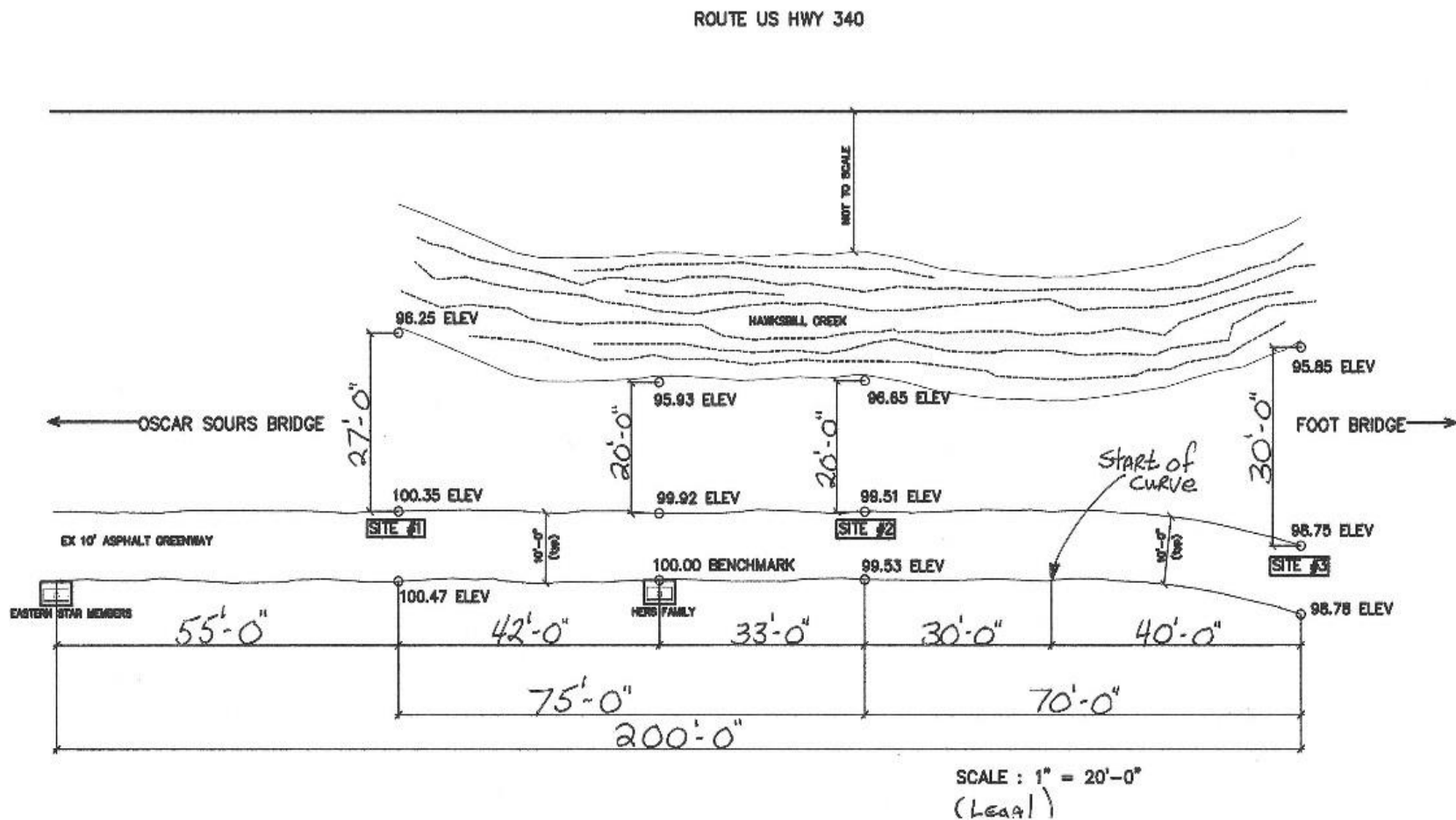
Location 2: Between Oscar Sours Bridge and foot bridge.







Possible HCAP Fishing Platform Sites - South Greenway



Any Questions?

Thank You!

